

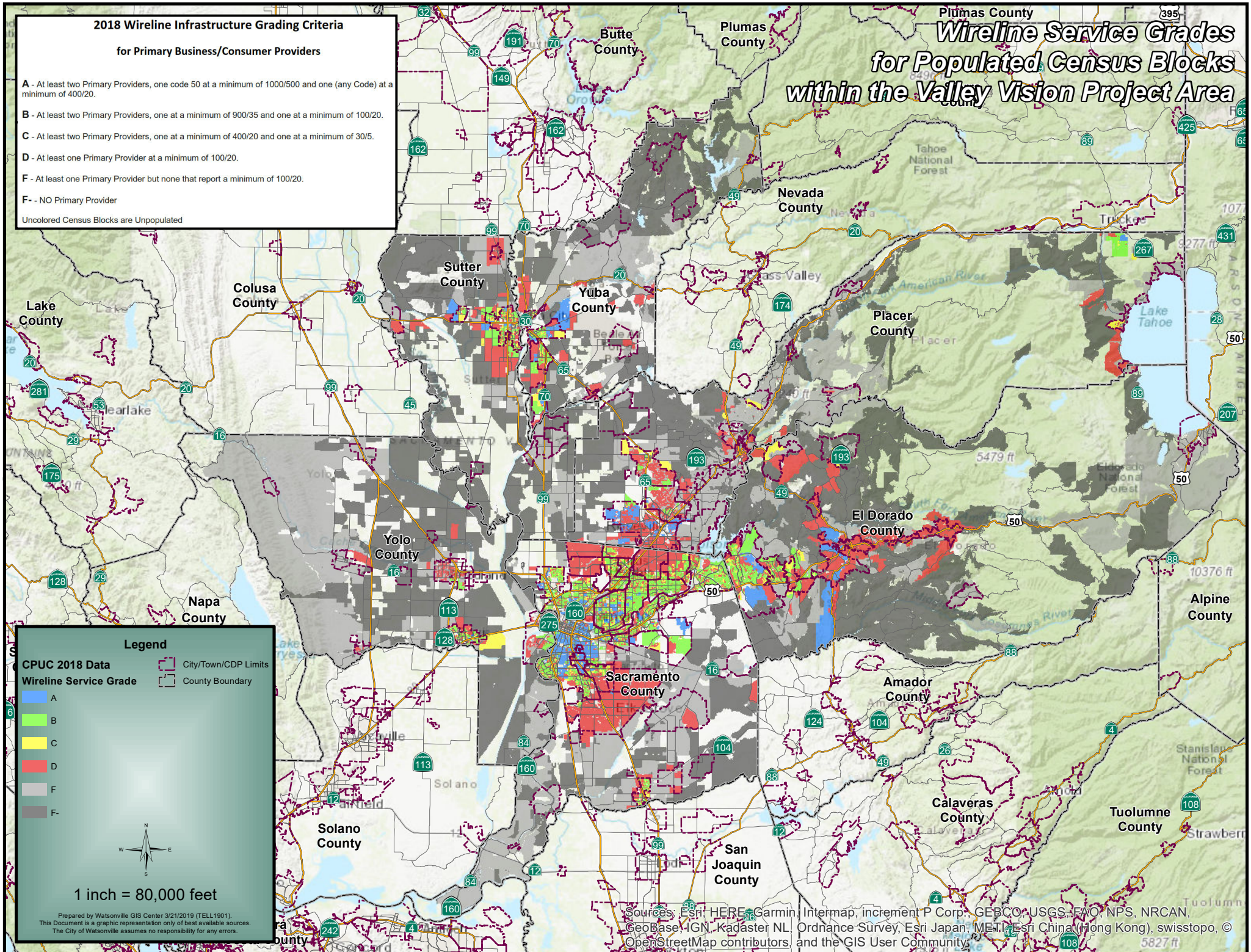
### 2018 Wireline Infrastructure Grading Criteria

#### for Primary Business/Consumer Providers

- A - At least two Primary Providers, one code 50 at a minimum of 1000/500 and one (any Code) at a minimum of 400/20.
- B - At least two Primary Providers, one at a minimum of 900/35 and one at a minimum of 100/20.
- C - At least two Primary Providers, one at a minimum of 400/20 and one at a minimum of 30/5.
- D - At least one Primary Provider at a minimum of 100/20.
- F - At least one Primary Provider but none that report a minimum of 100/20.
- F- - NO Primary Provider

Uncolored Census Blocks are Unpopulated

## Wireline Service Grades for Populated Census Blocks within the Valley Vision Project Area



#### Legend

- |                               |                      |
|-------------------------------|----------------------|
| <b>CPUC 2018 Data</b>         | City/Town/CDP Limits |
| <b>Wireline Service Grade</b> | County Boundary      |
| A                             |                      |
| B                             |                      |
| C                             |                      |
| D                             |                      |
| F                             |                      |
| F-                            |                      |



1 inch = 80,000 feet

Prepared by Watsonville GIS Center 3/21/2019 (TELL1901).  
This Document is a graphic representation only of best available sources.  
The City of Watsonville assumes no responsibility for any errors.

Sources: Esri, HERE, Garmin, Intermap, increment P Corp., GEBCO, USGS, FAO, NPS, NRCAN, GeoBase, IGN, Kadaster NL, Ordnance Survey, Esri Japan, METI, Esri China (Hong Kong), swisstopo, © OpenStreetMap contributors, and the GIS User Community.

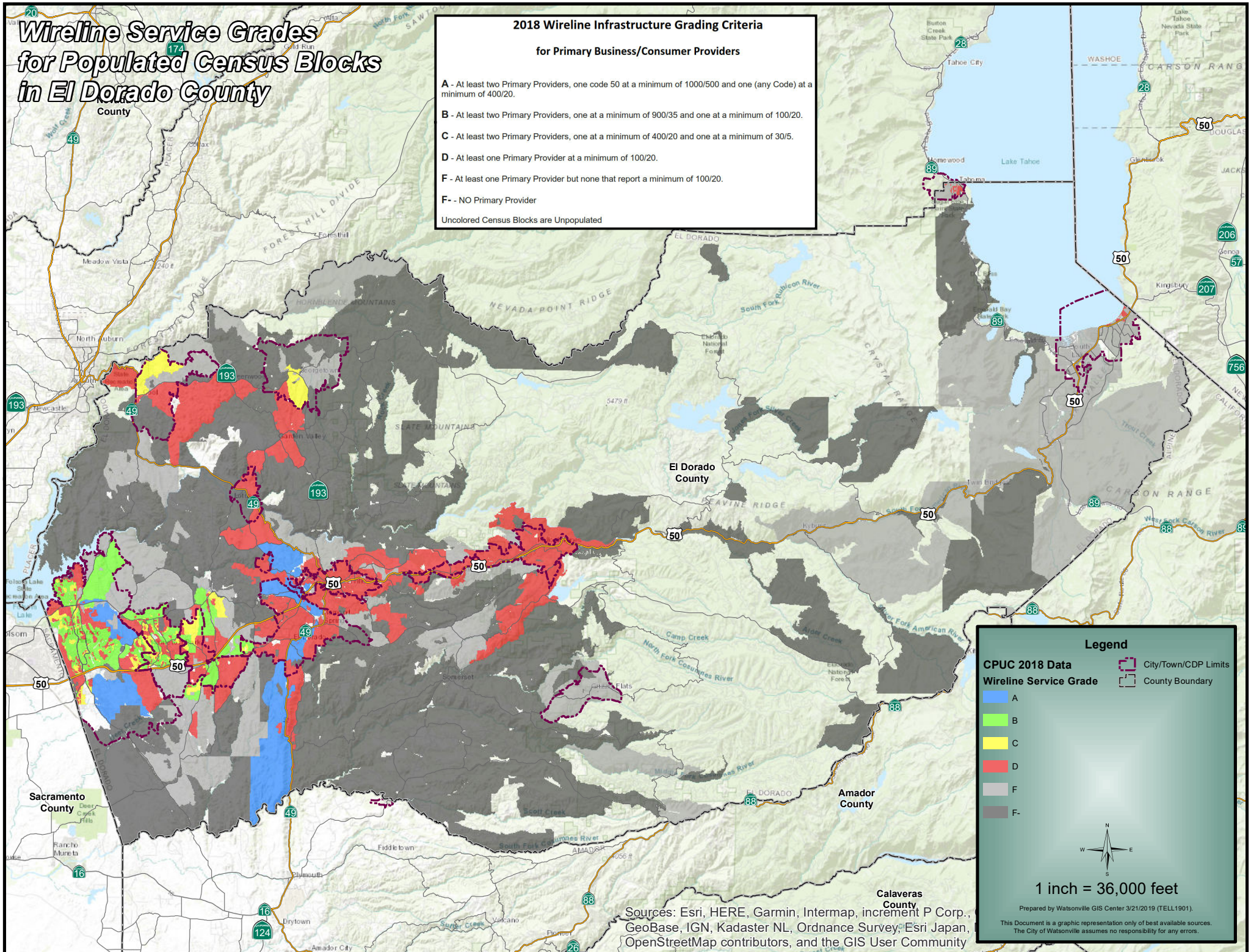
# Wireline Service Grades for Populated Census Blocks in El Dorado County

## 2018 Wireline Infrastructure Grading Criteria

### for Primary Business/Consumer Providers

- A** - At least two Primary Providers, one code 50 at a minimum of 1000/500 and one (any Code) at a minimum of 400/20.
- B** - At least two Primary Providers, one at a minimum of 900/35 and one at a minimum of 100/20.
- C** - At least two Primary Providers, one at a minimum of 400/20 and one at a minimum of 30/5.
- D** - At least one Primary Provider at a minimum of 100/20.
- F** - At least one Primary Provider but none that report a minimum of 100/20.
- F-** - NO Primary Provider

Uncolored Census Blocks are Unpopulated



**Legend**

**CPUC 2018 Data**

**Wireline Service Grade**

- A
- B
- C
- D
- F
- F-

City/Town/CDP Limits

County Boundary

1 inch = 36,000 feet  
 Prepared by Watsonville GIS Center 3/21/2019 (TELL1901).  
 This Document is a graphic representation only of best available sources.  
 The City of Watsonville assumes no responsibility for any errors.

Sources: Esri, HERE, Garmin, Intermap, increment P Corp., GeoBase, IGN, Kadaster NL, Ordnance Survey, Esri Japan, OpenStreetMap contributors, and the GIS User Community

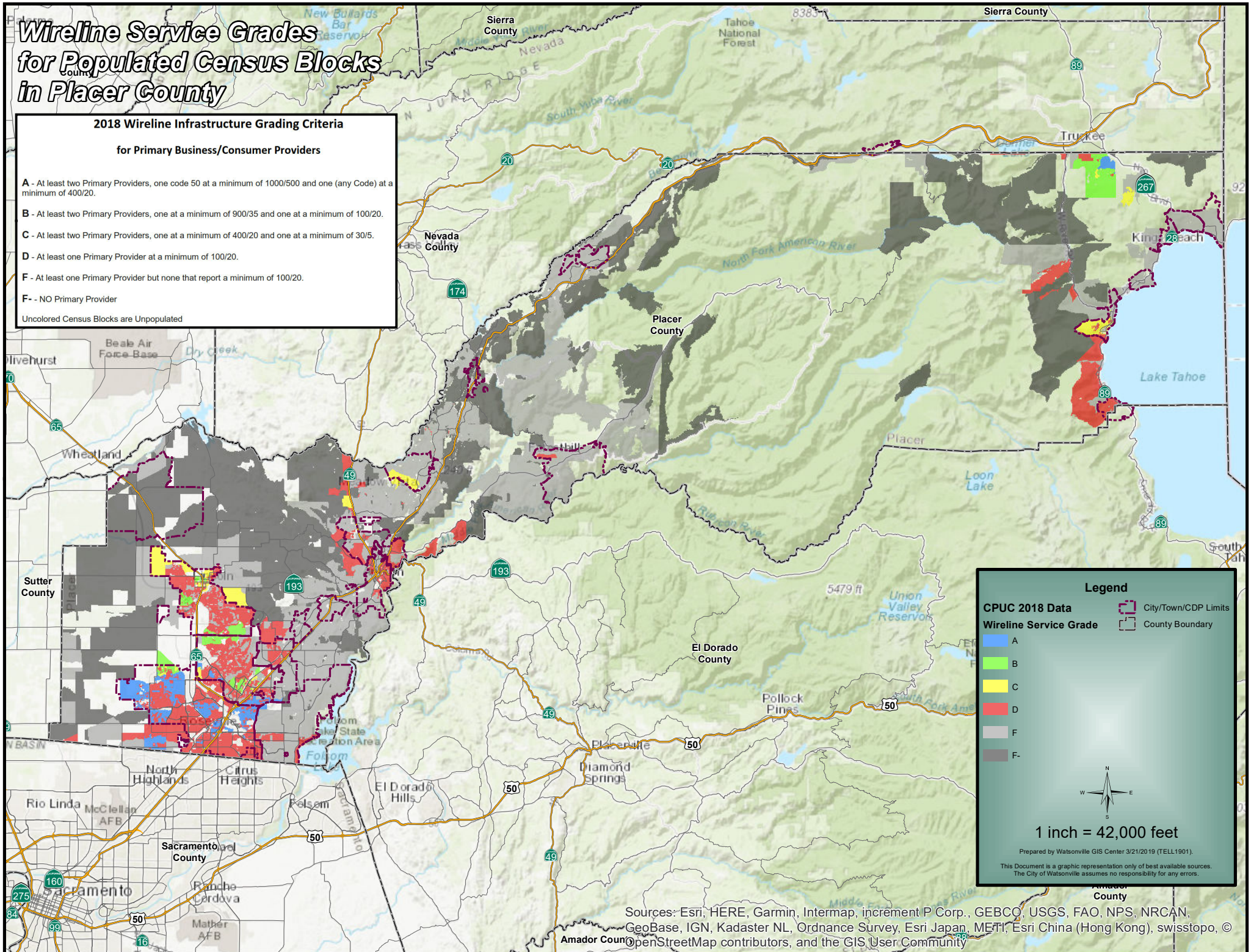
# Wireline Service Grades for Populated Census Blocks in Placer County

## 2018 Wireline Infrastructure Grading Criteria

### for Primary Business/Consumer Providers

- A** - At least two Primary Providers, one code 50 at a minimum of 1000/500 and one (any Code) at a minimum of 400/20.
- B** - At least two Primary Providers, one at a minimum of 900/35 and one at a minimum of 100/20.
- C** - At least two Primary Providers, one at a minimum of 400/20 and one at a minimum of 30/5.
- D** - At least one Primary Provider at a minimum of 100/20.
- F** - At least one Primary Provider but none that report a minimum of 100/20.
- F-** - NO Primary Provider

Uncolored Census Blocks are Unpopulated



### Legend

<b>CPUC 2018 Data</b>	
<span style="display: inline-block; width: 15px; height: 10px; background-color: lightblue; border: 1px solid black;"></span> A	<span style="display: inline-block; width: 15px; height: 10px; border: 1px dashed black;"></span> City/Town/CDP Limits
<span style="display: inline-block; width: 15px; height: 10px; background-color: lightgreen; border: 1px solid black;"></span> B	<span style="display: inline-block; width: 15px; height: 10px; border: 1px solid black;"></span> County Boundary
<span style="display: inline-block; width: 15px; height: 10px; background-color: yellow; border: 1px solid black;"></span> C	
<span style="display: inline-block; width: 15px; height: 10px; background-color: red; border: 1px solid black;"></span> D	
<span style="display: inline-block; width: 15px; height: 10px; background-color: lightgrey; border: 1px solid black;"></span> F	
<span style="display: inline-block; width: 15px; height: 10px; background-color: darkgrey; border: 1px solid black;"></span> F-	

**1 inch = 42,000 feet**

Prepared by Watsonville GIS Center 3/21/2019 (TELL1901).  
This Document is a graphic representation only of best available sources.  
The City of Watsonville assumes no responsibility for any errors.

Sources: Esri, HERE, Garmin, Intermap, increment P Corp., GEBCO, USGS, FAO, NPS, NRCAN, GeoBase, IGN, Kadaster NL, Ordnance Survey, Esri Japan, METI, Esri China (Hong Kong), swisstopo, © OpenStreetMap contributors, and the GIS User Community

# Wireline Service Grades for Populated Census Blocks in Sacramento County









## 2018 Wireline Infrastructure Grading Criteria

### for Primary Business/Consumer Providers

- A - At least two Primary Providers, one code 50 at a minimum of 1000/500 and one (any Code) at a minimum of 400/20.
- B - At least two Primary Providers, one at a minimum of 900/35 and one at a minimum of 100/20.
- C - At least two Primary Providers, one at a minimum of 400/20 and one at a minimum of 30/5.
- D - At least one Primary Provider at a minimum of 100/20.
- F - At least one Primary Provider but none that report a minimum of 100/20.
- F- - NO Primary Provider

Uncolored Census Blocks are Unpopulated

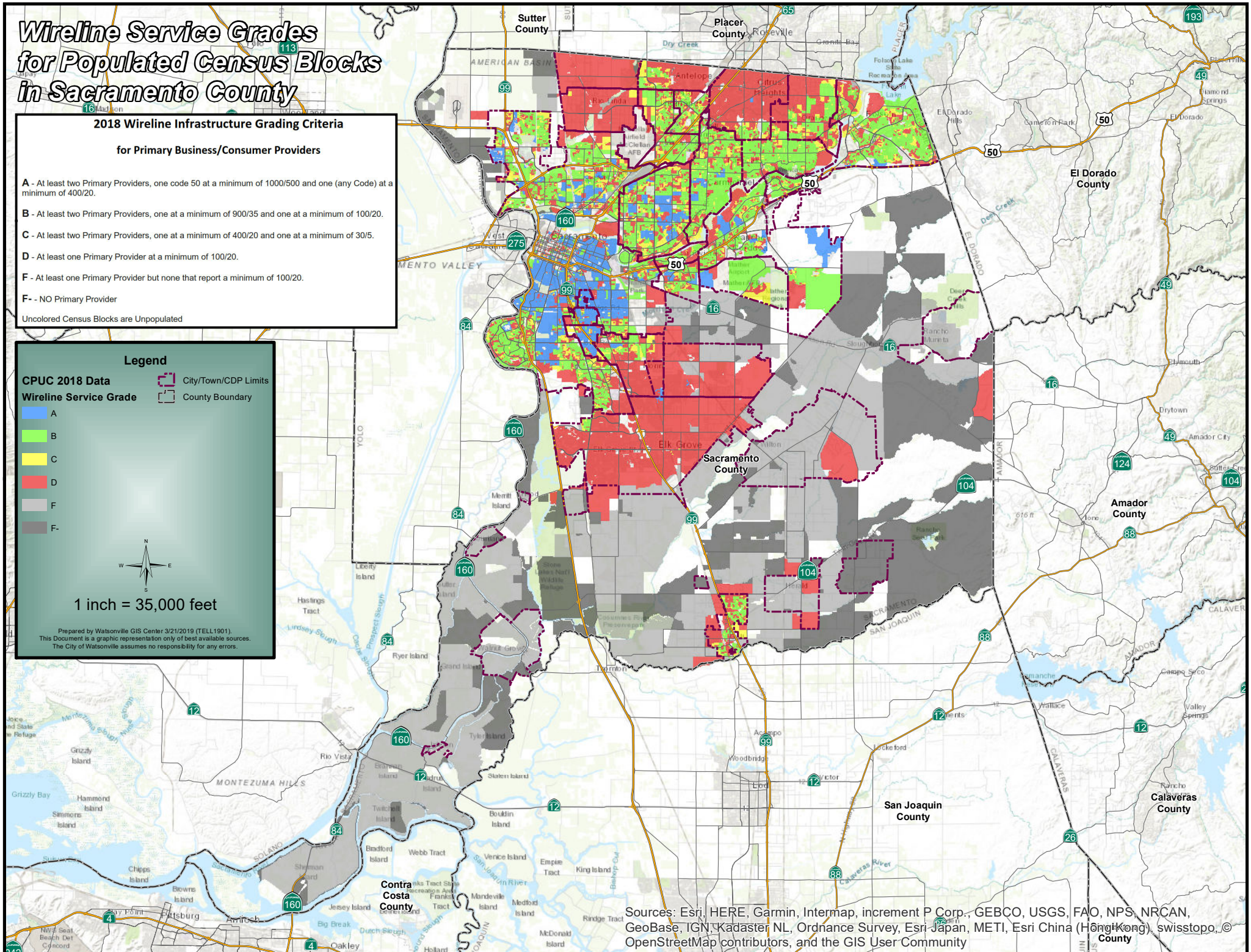
### Legend

- |   |  |
|---|--|
| <b>CPUC 2018 Data</b>   |  City/Town/CDP Limits |
| <b>Wireline Service Grade</b>   |  County Boundary      |
|  A  |  |
|  B  |  |
|  C  |  |
|  D  |  |
|  F  |  |
|  F- |  |



1 inch = 35,000 feet

Prepared by Watsonville GIS Center 3/21/2019 (TELL1901).  
This Document is a graphic representation only of best available sources.  
The City of Watsonville assumes no responsibility for any errors.

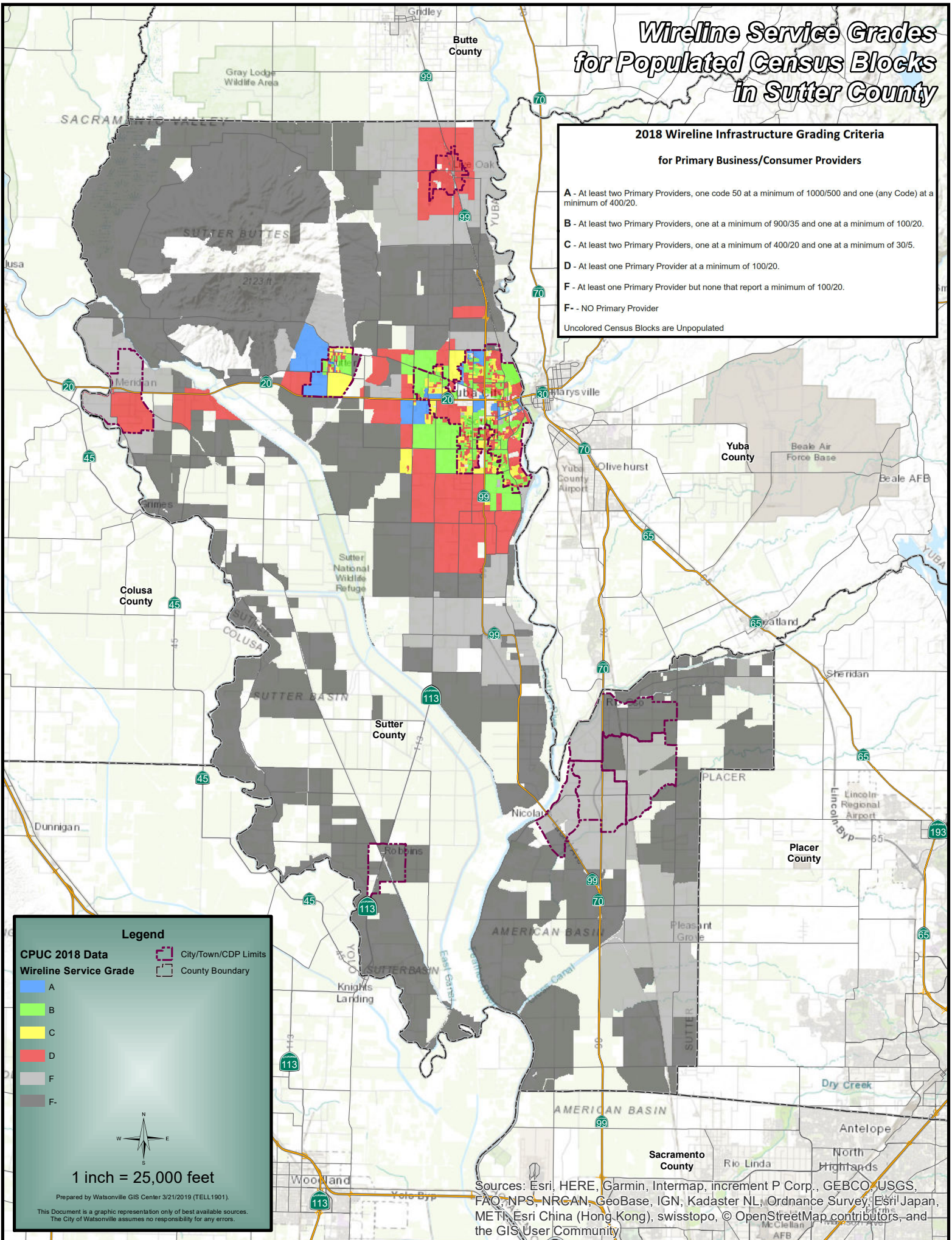


Sources: Esri, HERE, Garmin, Intermap, increment P Corp., GEBCO, USGS, FAO, NPS, NRCAN, GeoBase, IGN, Kadaster NL, Ordnance Survey, Esri Japan, METI, Esri China (Hong Kong), swisstopo, © OpenStreetMap contributors, and the GIS User Community

# Wireline Service Grades for Populated Census Blocks in Sutter County

## 2018 Wireline Infrastructure Grading Criteria for Primary Business/Consumer Providers

- A - At least two Primary Providers, one code 50 at a minimum of 1000/500 and one (any Code) at a minimum of 400/20.
  - B - At least two Primary Providers, one at a minimum of 900/35 and one at a minimum of 100/20.
  - C - At least two Primary Providers, one at a minimum of 400/20 and one at a minimum of 30/5.
  - D - At least one Primary Provider at a minimum of 100/20.
  - F - At least one Primary Provider but none that report a minimum of 100/20.
  - F - NO Primary Provider
- Uncolored Census Blocks are Unpopulated



**Legend**

**CPUC 2018 Data**

**Wireline Service Grade**

- A
- B
- C
- D
- F
- F-

City/Town/CDP Limits

County Boundary

1 inch = 25,000 feet

Prepared by Watsonville GIS Center 3/21/2019 (TELL1901).

This Document is a graphic representation only of best available sources. The City of Watsonville assumes no responsibility for any errors.

Sources: Esri, HERE, Garmin, Intermap, increment P Corp., GEBCO, USGS, FAO, NPS, NRCAN, GeoBase, IGN, Kadaster NL, Ordnance Survey, Esri Japan, METI, Esri China (Hong Kong), swisstopo, © OpenStreetMap contributors, and the GIS User Community

# Wireline Service Grades for Populated Census Blocks in Yolo County

**Legend**

**CPUC 2018 Data**

**Wireline Service Grade**

- A
- B
- C
- D
- F
- F-

City/Town/CDP Limits  
County Boundary

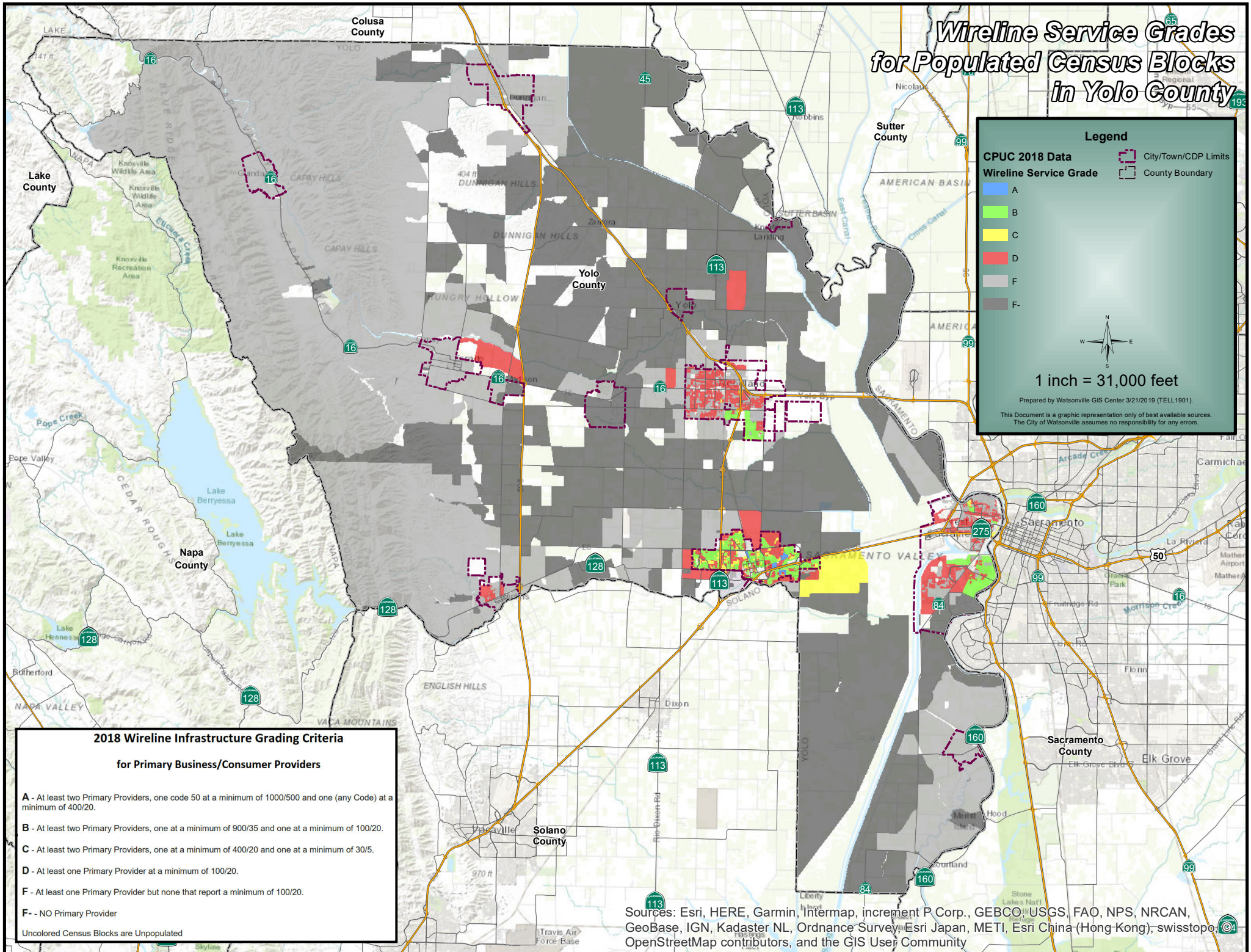
1 inch = 31,000 feet

Prepared by Watsonville GIS Center 3/21/2019 (TELL1901).  
This Document is a graphic representation only of best available sources.  
The City of Watsonville assumes no responsibility for any errors.

**2018 Wireline Infrastructure Grading Criteria  
for Primary Business/Consumer Providers**

- A** - At least two Primary Providers, one code 50 at a minimum of 1000/500 and one (any Code) at a minimum of 400/20.
- B** - At least two Primary Providers, one at a minimum of 900/35 and one at a minimum of 100/20.
- C** - At least two Primary Providers, one at a minimum of 400/20 and one at a minimum of 30/5.
- D** - At least one Primary Provider at a minimum of 100/20.
- F** - At least one Primary Provider but none that report a minimum of 100/20.
- F-** - NO Primary Provider

Uncolored Census Blocks are Unpopulated

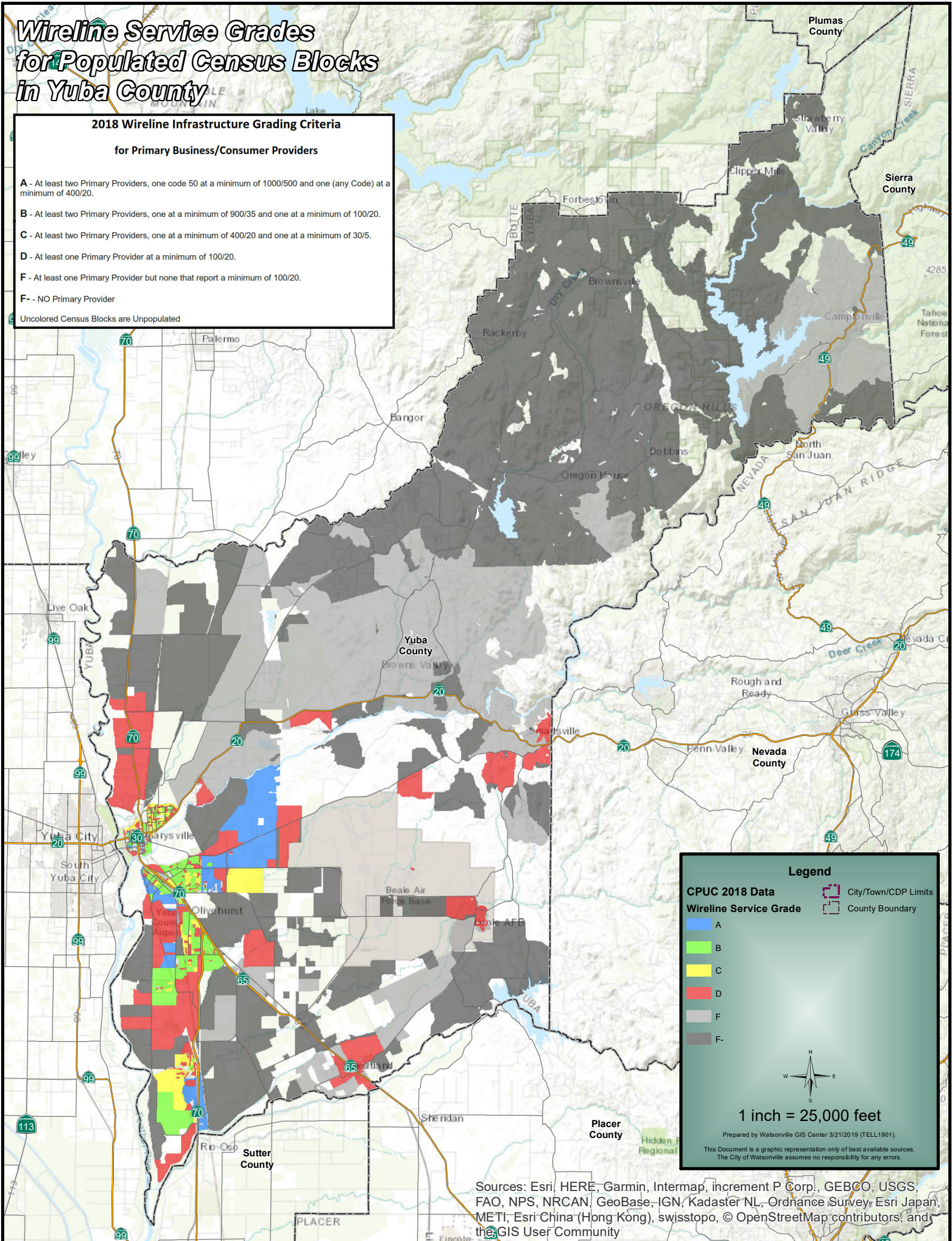


Sources: Esri, HERE, Garmin, Intermap, increment P Corp., GEBCO, USGS, FAO, NPS, NRCAN, GeoBase, IGN, Kadaster NL, Ordnance Survey, Esri Japan, METI, Esri China (Hong Kong), swisstopo, OpenStreetMap contributors, and the GIS User Community

# Wireline Service Grades for Populated Census Blocks in Yuba County

## 2018 Wireline Infrastructure Grading Criteria for Primary Business/Consumer Providers

- A - At least two Primary Providers, one code 50 at a minimum of 1000/500 and one (any Code) at a minimum of 400/20.
  - B - At least two Primary Providers, one at a minimum of 900/35 and one at a minimum of 100/20.
  - C - At least two Primary Providers, one at a minimum of 400/20 and one at a minimum of 30/5.
  - D - At least one Primary Provider at a minimum of 100/20.
  - F - At least one Primary Provider but none that report a minimum of 100/20.
  - F- - NO Primary Provider
- Uncolored Census Blocks are Unpopulated



Sources: Esri, HERE, Garmin, Intermap, increment P Corp., GEBCO, USGS, FAO, NPS, NRCAN, GeoBase, IGN, Kadaster NL, Ordnance Survey, Esri Japan, METI, Esri China (Hong Kong), swisstopo, © OpenStreetMap contributors, and the GIS User Community